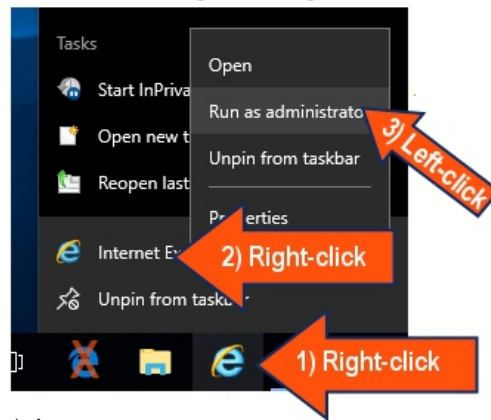


Temporary how to log in to CAREDM Vista

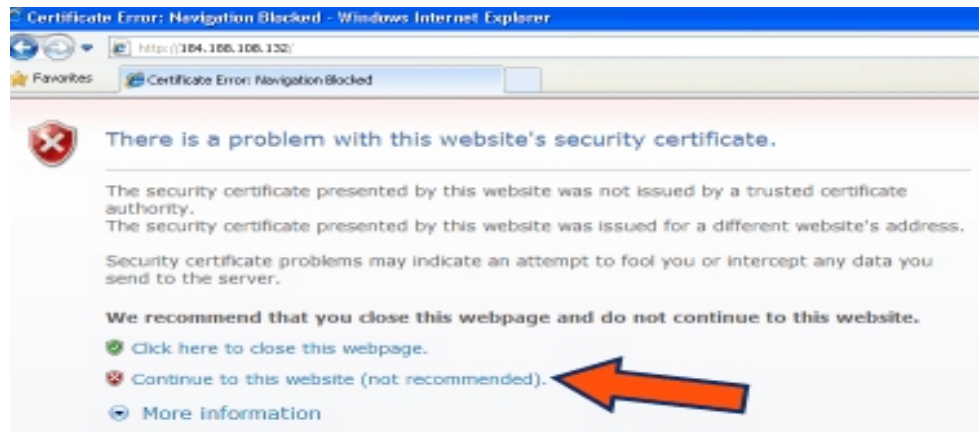
If you are having problems, please and thank you call Kevin at 602-263-8958 x101

- 1) Open Internet Explorer.

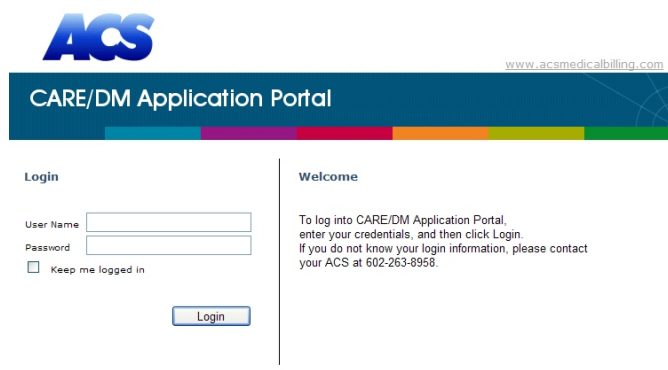
NOTE: if you have Internet Explorer 11, please refer to the following graphic to open:



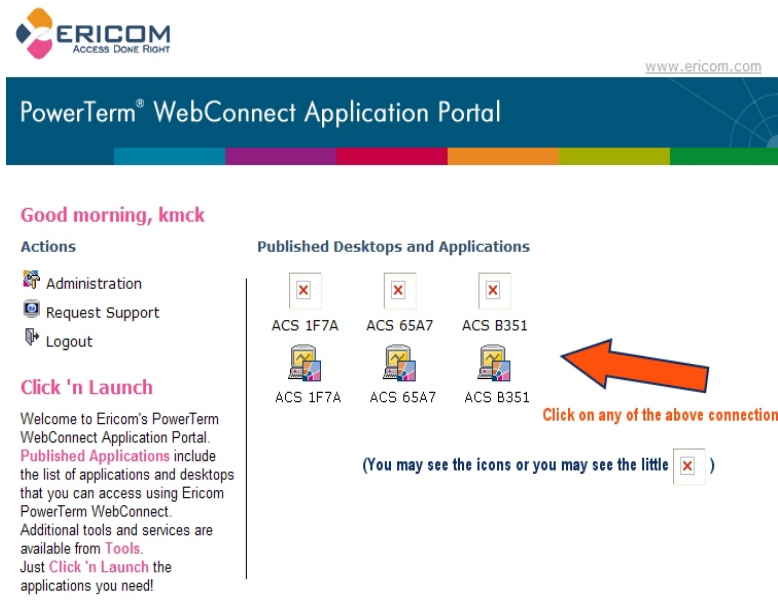
- 2) Go to caredm.com/vista
- 3) Click "Continue to this website (not recommended)."



- 4) Log into the CAREDM
If you get "The system could not log you on...", please call Kevin 602-263-8958 x101

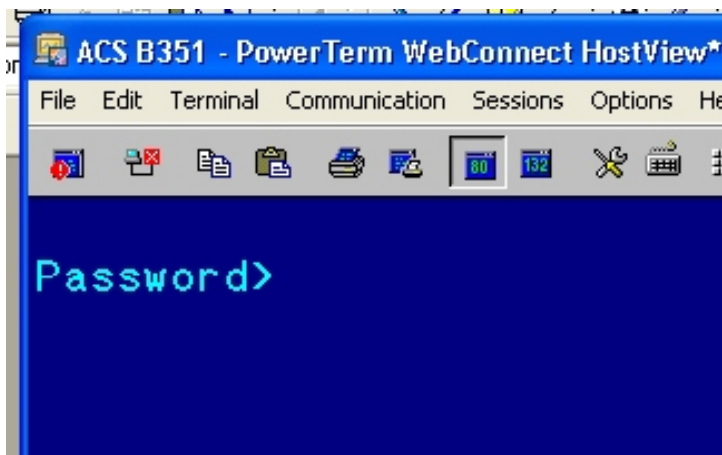


5) Click on a Session Connection

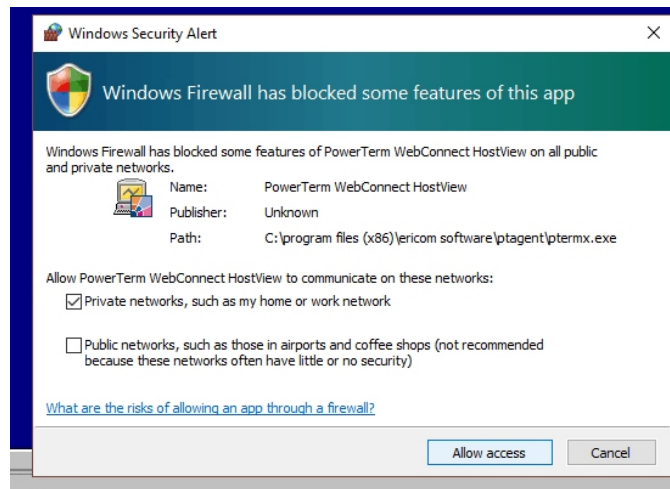


6) If prompted, allow the installation to continue (only required on your first login)

7) Logging into the blue CARE/DM window is the same as before:



- 8) If you have Windows Firewall enabled, it may try to block CARED.M. Click on the “Allow” button:



You're all set!