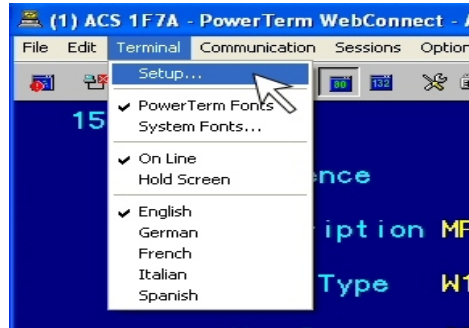


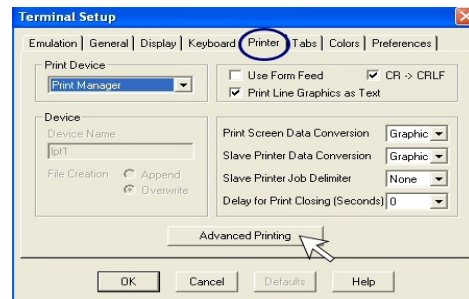
## Changing between N1PLY & W1PLY using Powerterm with *Graphic Data Conversion*

Step one: Go to Printer Services and find the sequence you'd like to print. Prior to printing, follow these 5 easy steps:

At top left of the screen, click **Terminal** and then click **Setup**



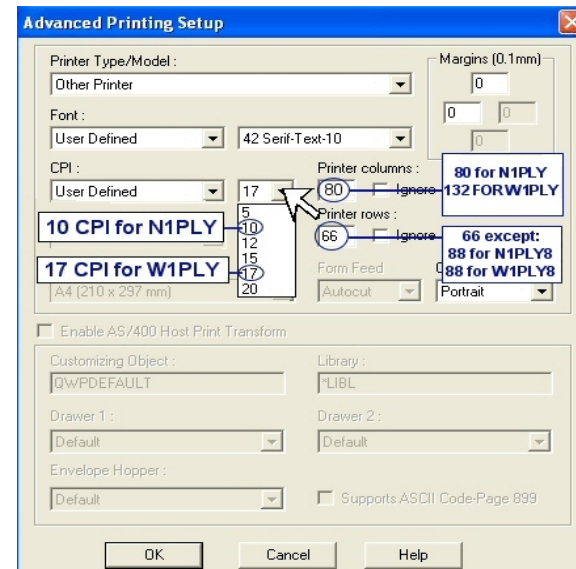
In the Terminal Setup Window, Click on the **Printer** tab at the top, then click on the **Advanced Printing** button



In the Advanced Printing Setup Window, Click on the **CPI drop-down box**:  
Choose **10** CPI for N1PLY reports  
Choose **17** CPI for W1PLY reports

Set **Printer Columns** to:  
**80** for N1PLY reports  
**132** for W1PLY reports

Set **Printer Rows** to:  
**88** for N1PLY8 and W1PLY8 reports  
**66** for all other reports



Click the **OK** button on the Advanced Printing Setup Window  
Click the **OK** button on the Terminal Setup Window

Print your report.